

Good King Wenceslas

The Ukulele Orchestra of GB 2016

G / / / G / / / C / / / G / / /

Good King Wen - ce - las looked out On the Feast of Ste - ven,
 "Hith - er, page, and stand by me, If thou know'st it, tell - ing,
 "Bring me flesh, and bring me wine, Bring me pine - logs hith - er;
 "Sire, the night is dar - er now, And the wind blows strong - er;
 In his mas - ter's steps he trod, Where the snow lay dint - ed;

5 G / / / G / / / C / / / G / / /

When the snow lay round a - out, Deep and crisp and e - ven,
 You - der peas - ant, who is he? Where, and what his dwell - ing?"
 Thou and I will see him dine When we bear them thith - er".
 Fails my heart, I know not how, I can go no long - er".
 Heat was in the ve - ry sod Which the saint had print - ed;

9 G / / / Em / / / C / / / G / / /

Bright - ly shone the moon that night, Thouth the frost was cru - el,
 "Sire, he lives a good league hence, Un - der - neath the moun - tain;
 Page and mon - arch forth they went, Forth they went to - geth - er;
 "Mark my foot - steps, my good page, Tread thou in them bold - ly;
 There - fore, Christ - ian men, be sure, Wealth or rank pos - sess - ing.

13 G / / / C / / / Em / / / D / / / G / / /

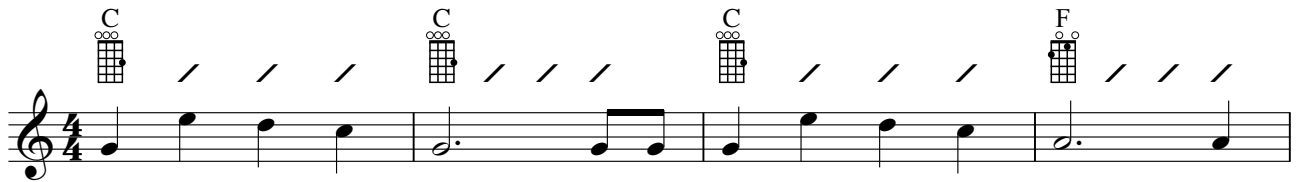
When a poor man came in sight, Gath - ring win - ter
 Right a - gainst the for - est fence, By Saint Ag - nes'
 Through the rude wind's wild la - ment And the bit - ter
 Thou shalt find the win - ter's rage Freeze thy blood less
 Ye who now will bless the poor, Shall your - selves find

16 Em / / / C / / / G / / /

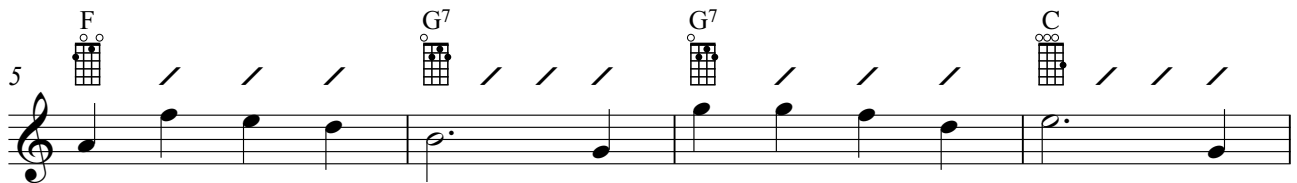
fu - - - el.
 foun - - - tain.
 weath - - - er.
 cold - - - ly.
 bless - - - ing.

Jingle Bells

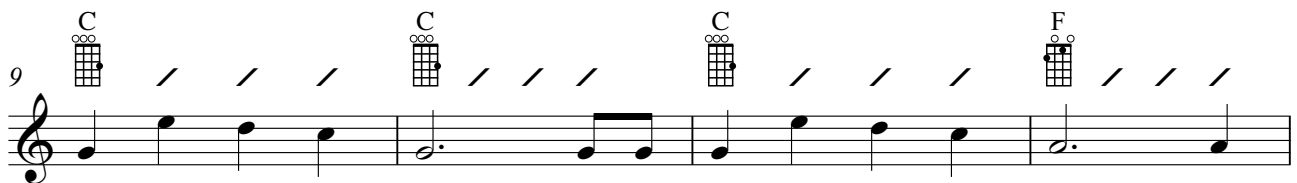
The Ukulele Orchestra of GB 2016



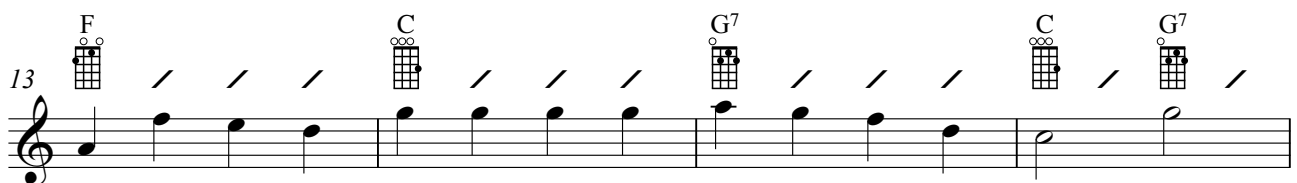
Dash - ing through the snow in a one horse o - pen sleigh, _____
 day or two a - go I _____ thought I'd take a ride, and
 day or two a - go, the _____ sto - ry I must tell. I
 Now the ground is white. _____ Go it while you're young, _____







O'er the fields we go _____ laugh - ing all the way. _____
 soon Miss Fan - ny Bright was seat - ed by my side. The
 went out on the snow, and on my back I fell; A
 take the girls to - night and sing this sleigh - ing song; Just

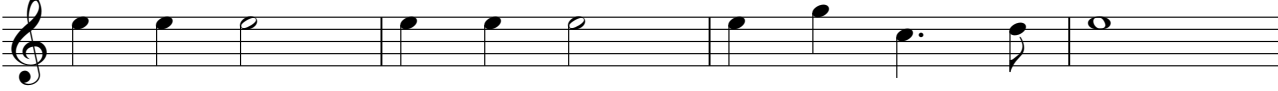


Bells on bob - tail ring _____ ma - king spi - rits bright. What
 horse was lean and lank, mis - for - tune seemed his lot, he
 gent was ri - ding by In a one horse o - pen sleigh, he
 get a bob - tailed bay, two _____ for - ty as his speed, _____








fun it is to ride and sing a sleigh - ing song to - night. Oh.
 got in - to a drif - ted bank, and we, we got up - sot.
 laughed as there I spraw - ling lie, but quick - ly drove a - way.
 hitch him to an o - pen sleigh and crack! You'll take the lead.

17  / / /  / / /  / / /  / / /







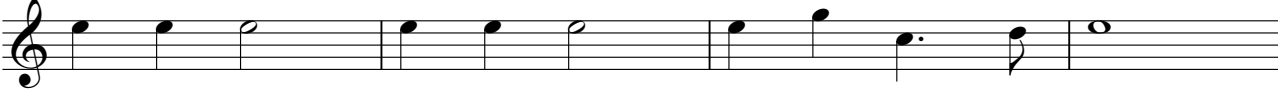
Jin - gle bells, jin - gle bells, jin - gle all the way.

21  / / /  / / /  / / /  / / /








Oh what fun it is to ride on a one horse op - en sleigh. Oh.

25  / / /  / / /  / / /  / / /



Jin - gle bells, jin - gle bells, jin - gle all the way.

29  / / /  / / /  / / /  / / /



Oh what fun it is to ride on a one horse o - pen sleigh.

[A
start of
2nd and
3rd vs

We Wish You A Merry Christmas

The Ukulele Orchestra of GB 2016

Ukulele chords: G, C, A⁷

Measures 1-3 of the song. The staff is in G major (one sharp) and 3/4 time. Measure 1 contains a G chord. Measure 2 contains a C chord. Measure 3 contains an A⁷ chord.

We wish you a me - rry Christ - mas, we wish you a me - rry
So bring us some fig - gy pud - ding, so bring us some fig - gy
And we won't go un - til we've got some, we won't go un - til we've

Ukulele chords: D⁷, B⁷, Em, G

Measures 4-7 of the song. The staff continues from the previous system. Measure 4 contains a D⁷ chord. Measure 5 contains a B⁷ chord. Measure 6 contains an Em chord. Measure 7 contains a G chord.

Christ - mas, we wish you a me - rry Christ - mas and a
pud - ding, so bring us some fig - gy pud - ding, and____
got some, we won't go un - til we've got some so____

Ukulele chords: Am, D⁷, G

Measures 8-10 of the song. The staff continues from the previous system. Measure 8 contains an Am chord. Measure 9 contains a D⁷ chord. Measure 10 contains a G chord.

Ha - ppy New Year. Good
bring it some out here.
bring some out here.

Ukulele chords: G, D⁷, Em, D

Measures 11-13 of the song. The staff continues from the previous system. Measure 11 contains a G chord. Measure 12 contains a D⁷ chord. Measure 13 contains an Em chord. Measure 14 contains a D chord.

ti - dings we bring, to you and your kin, we

Ukulele chords: G, D, Am, D⁷, G

Measures 14-18 of the song. The staff continues from the previous system. Measure 14 contains a G chord. Measure 15 contains a D chord. Measure 16 contains an Am chord. Measure 17 contains a D⁷ chord. Measure 18 contains a G chord.

wish you a me - rry Christ - mas and a Ha - ppy New Year.